

Free Bundled Software

For the Integra Series (Models 2700, 2701, and 2750)

A set of free software tools is included with every Integra Series instrument. These tools are designed to get optimal performance from Model 2700/2701/2750 Multimeter/Switching systems. The software tools perform tasks that range from simple start-up routines and real-time graphing to supporting fully custom data acquisition and analysis solutions.



Minimum System Requirements

- Pentium-class PC with Windows 98 (SE) operating system or later versions
- Model 2700 (Firmware B03 or later), Model 2701, or Model 2750 (Firmware A02 or later) and one or more supported plug-in switch/control modules.

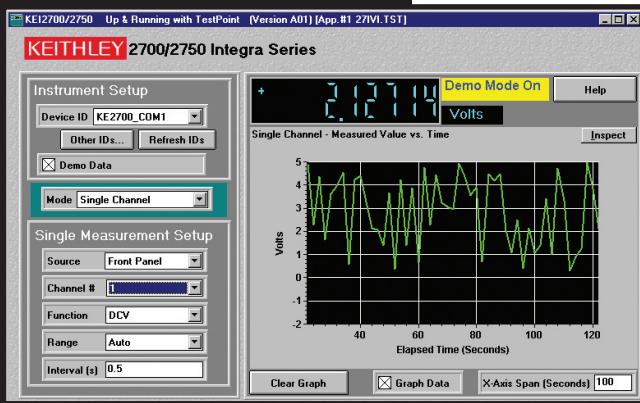
TestPoint Runtime

TestPoint Runtime is an easy-to-use software package that includes start-up software and basic application support. Its start-up software will get the Model 2700/2701/2750 “Up & Running” quickly. It simplifies the system setup by verifying, with just a few mouse clicks, that the hardware, wiring, communications, and software drivers are installed and operating properly. It can also configure a system as well as validate a system configuration quickly and easily. This is all done in a familiar Windows point-and-click environment.

This package can perform a number of other tasks, including displaying, analyzing, and saving data. It can automatically graph data from up to eight channels, log multiple channels of data to disk in real time, troubleshoot any channel, and save multiple configurations to disk. It also supports AC and DC volts and current, resistance (2- and 4-wire), frequency, temperature (thermocouple), period, and triggering.

TestPoint Runtime can also be used as the core of a more complex application.

It is an open source that can be modified to include new features or expanded into a semi-custom package with the TestPoint development package.



TestPoint Runtime

- Start-up software
- Hardware and device driver verification
- Instrument configuration
- Datalogging
- Graphing
- Ability to be modified with more functionality by using TestPoint

2700, 2701, and 2750 Software Selection Guide

	TestPoint Runtime Start-up Software	ExceLINX-1A for 2700/2701/2750	TestPoint Application Development Package	IVI-Based Instrument Drivers
Basic Datalogging	1			
Datalogging directly into Excel		1		
Semi-Custom Datalogging or Control System		1	1	
LabVIEW, LabWindows/CVI, VB, or C/C++				1
	FREE download from keithley.com	Order ExceLINX-1A	Order TestPoint	FREE download from keithley.com

1.888.KEITHLEY (U.S. only)

www.keithley.com



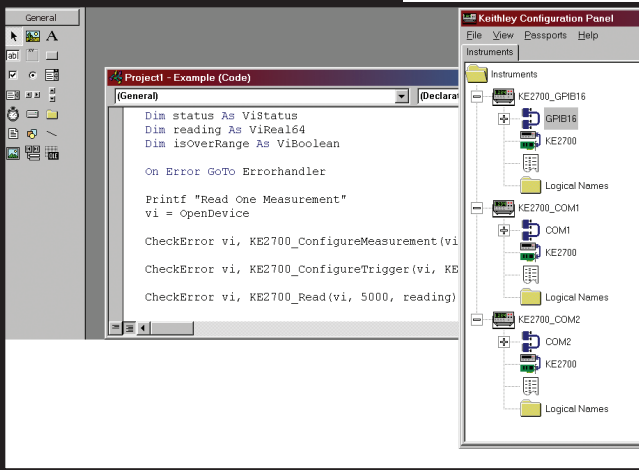
A GREATER MEASURE OF CONFIDENCE

Bundled software for Integra Series systems

DMMS, DATA ACQUISITION/
SWITCHING SYSTEMS

Free Bundled Software

For the Integra Series (Models 2700, 2701, and 2750)



IVI (Interchangeable Virtual Instruments) Drivers

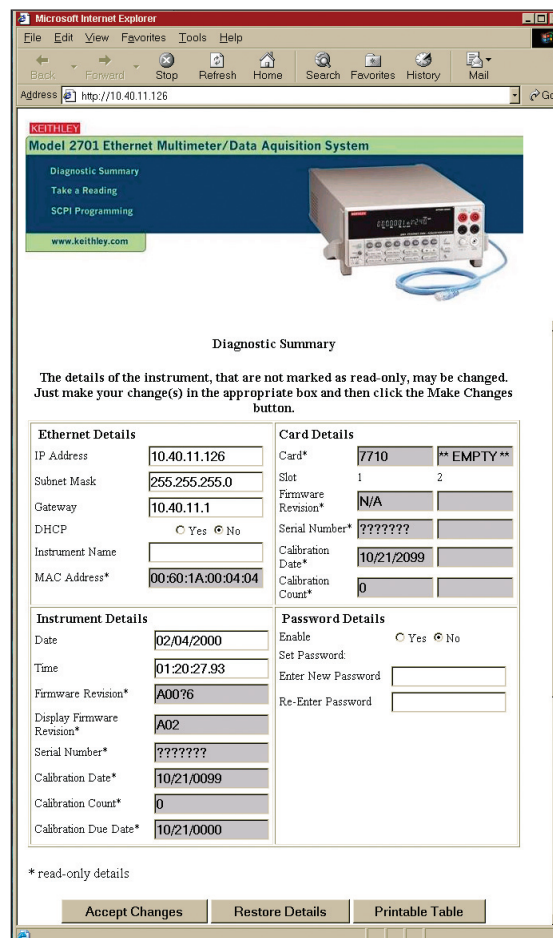
Developers often prefer to create their own custom applications. The Integra Series instruments supply IVI device drivers that support many application development environments including LabVIEW, LabWindows/CVI, Visual Basic, C/C++, and TestPoint. These IVI drivers are VISA based and support all the functionality of the Model 2700/2701/2750. Numerous examples are supplied as well as an online help utility.

IVI Drivers

- LabVIEW drivers
- LabWindows/CVI drivers
- Visual Basic, C/C++ drivers
- TestPoint drivers

Web Diagnostic Tool

- Read and set network parameters
- Send command strings and receive data
- Debug



Free built-In Web diagnostic tool (2701 only)

To start communicating with the Integra Series instrument, simply connect the 2701 to a PC Ethernet port using the supplied RJ-45 crossover cable, start Microsoft® Internet Explorer® version 5.0 or later, and type the instrument's IP address into the URL line. The built-in web diagnostic interface allows for easy communication and debugging, without the need to install external software. This interface makes it easy to read and set network parameters such as IP address, subnet mask, gateway, MAC address, calibration dates, and other data stored in the Integra Series instrument. It also takes readings from the instrument and allows the user to send command strings and receive data.

1.888.KEITHLEY (U.S. only)

www.keithley.com

KEITHLEY

A GREATER MEASURE OF CONFIDENCE